

# BELT CLEANER



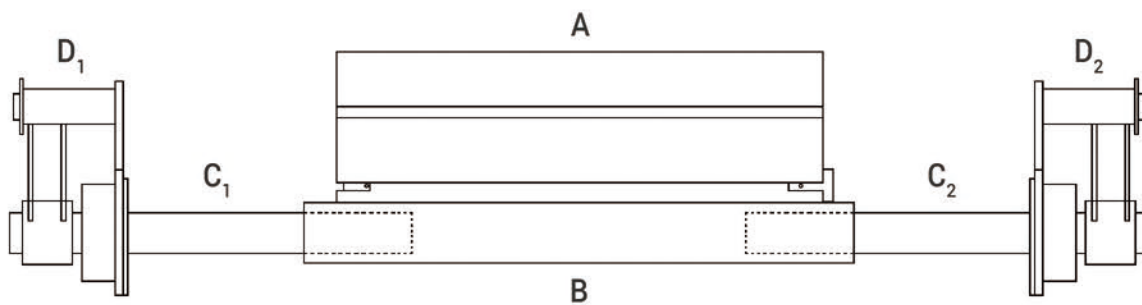
*Clean atmosphere built by us.*

# PRIMARY BELT CLEANER

Primary belt cleaner is the most important part in conveyor belt cleaning system. It located closely under the head drum to make the first step of cleaning for the whole system.



90% residue materials can be cleaned by it in transportation. So it is necessary to guarantee the strength of frame and tensioners, the wear abrasive ability of blades, which influence products effect lot.



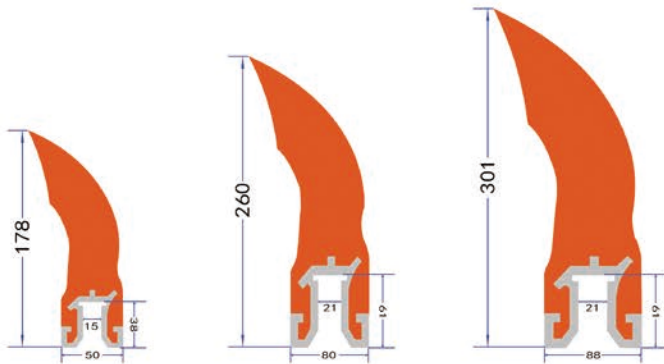
## Specification:

Belt Width (mm)	A (mm)	B (mm)	C (mm)	D (pcs)	Scraper Weight (kg)			Total Weight (kg)		
					178mm	260mm	301mm	178mm	260mm	301mm
650	600	650	700	1	6.5	13	15.3	37	55	60
800	762	800	700	1	8	16	18.9	41	61	67
1000	914	1000	700	1	10	20	23.6	45	68	73
1200	1067	1200	700	2	12	28	23.6	55	75	80
1400	1321	1400	700	2	14	32	33	59	86	91
1600	1524	1600	700	2	16	36	37.8	63	93	98
1800	1676	1800	700	2	18	40	42.5	68	101	105
2000	1828	2000	700	2	20	44	47.2	83	107	112
2200	1912	2200	900	2	22	48	41.9	88	113	118



## Blade Part:

This part touch conveyor belt to clean the material on it.



- Wear abrasive Polyurethane material.
- Color can be customized.
- Temperature from -20 to 120 °C available.
- Blade is detachable.
- Used in power plant, mining, port, cement plant.

Blade Size	178mm	260mm	301mm
Belt Speed	≤3.5m/s	≤6m/s	≤7.8m/s

## Tensioner Part:

Different tensioner types to meet various conveyor type and cleaning requirements.

The first is Spring Tensioner, standard equipped for our primary polyurethane belt cleaner. Strong enough to give cleaner a suitable power to closely touch to the belt surface.

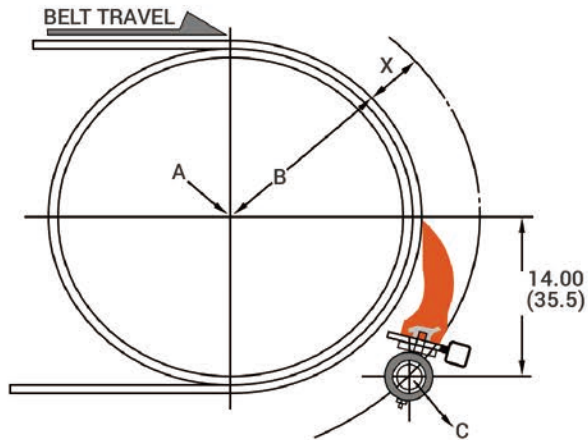


The second is Automatic Gear Tensioner, suitable for many heavy duty conveyor line. Self adjustable advantage can save labour to modify it when blade wear much until used up.



RITCLEANER used well in gloce different environments and transport material.

## Installment:



- A. Center point of pulley.
- B. Radius of head pulley including lagging and belt.
- C. Center point of belt cleaner mainframe.

## Datasheet Polyurethane Material:

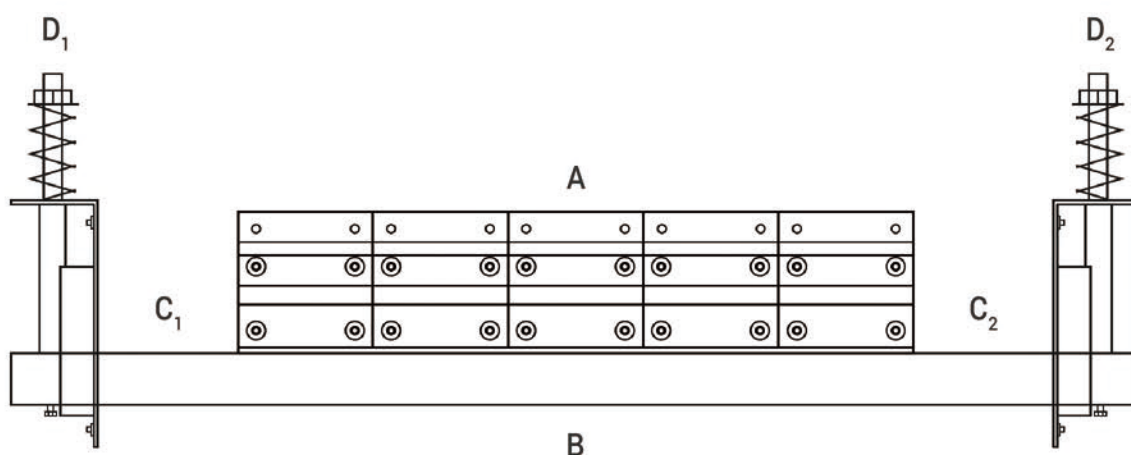
Specification	Polyurethane Type
The largest belt speed fpm (m/s):	4.6/6/7.8
Application temperature:	Continuous: -30~70 °C Transient: -40~ 85 °C / -40~120 °C
Roller diameter in. (mm):	Roller Diameter (mm) : 300-600 /500-1000/ 800-1500
Hardness (Shore A)	85+-2
Tensile strength	53
Elongation break	614
Tear strength	108
Deformation rate in 23h	30
Abrasion (mm <sup>3</sup> /1.61KM)	0.012
Springback (%)	20

# SECONDARY TUNGSTEN BELT CLEANER

Tungsten belt cleaner is very necessary in the belt cleaning system, because the rest 10% materials are cleaned by it. Our RIT secondary tungsten cleaner is consisted by frame, rubber bottom, tungsten blades, and spring tensioner parts.



Rubber bottom hardness is 73 Shore A, Which has a very good blades damage the belt. Blades are uniform and not sharp, friendly for belt so that very well to clean the belt surface.



## Specification:

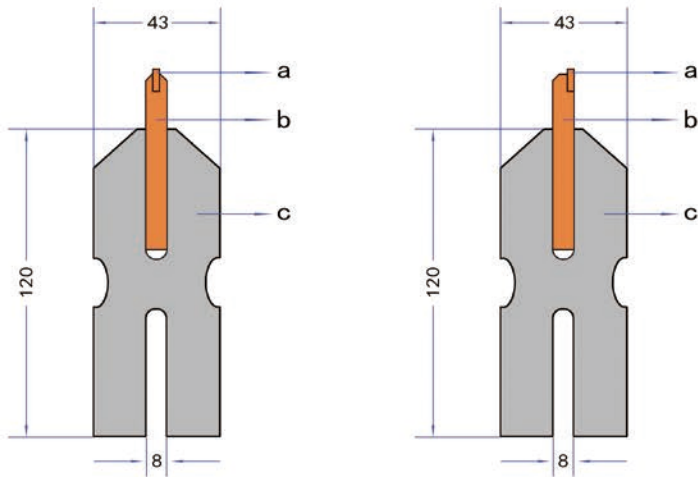
Belt Width (mm)	A (pcs)	B (mm)	C (mm)	D (pcs)	Scraper Weight (kg)	Total Weight (kg)
650	4	650	700	1	6.8	25
800	5	800	700	1	8	29
1000	6	1000	700	1	10	34
1200	8	1200	700	2	13	41
1400	9	1400	700	2	15	46
1600	10	1600	700	2	17	51
1800	12	1800	700	2	20	56
2000	13	2000	700	2	22	60
2200	14	2200	900	2	24	65



## Blade Part:

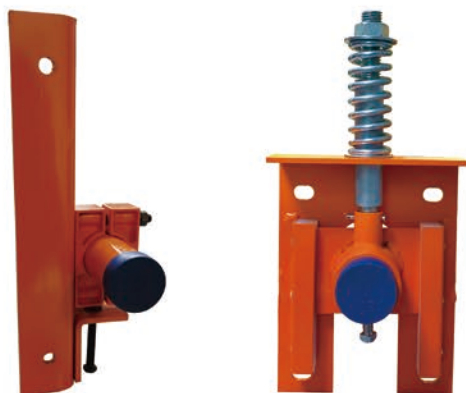
Tungsten Blade is very popular with good wear abrasive ability in secondary belt cleaner field.

- Part a in bellow drawing: Tungsten blade.
- Part b: Alloy support.
- Part c: 73 shore A rubber base.



## Tensioner Part:

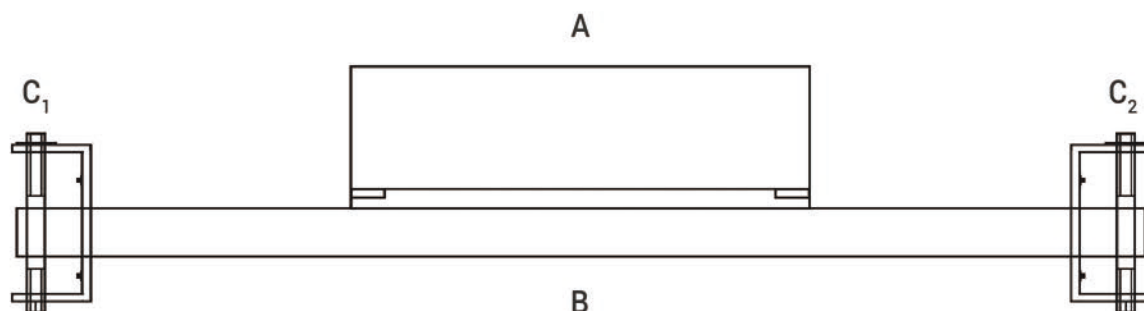
Secondary belt cleaner use Spring tensioner and Verticle tensioner, can shake up and down freely as the conveyor belt runing. Very well to flow the shake of belt so that can closely touch to the belt to achieve very well cleaning effect.



# SECONDARY PU BELT CLEANER

Secondary PU belt cleaner also named water Sweeper Cleaner, it usually be put behind the secondary tungsten cleaner to further to remove the most tiny and muddy material such as water and powder.

Flat top and 85 Shore A PU material can softly touch to the belt bottom so that can clean the rest tiny material well. Adjustable tensioner part can make it very easily to be modified as the conveyor frame.



## Specification: Orange Type

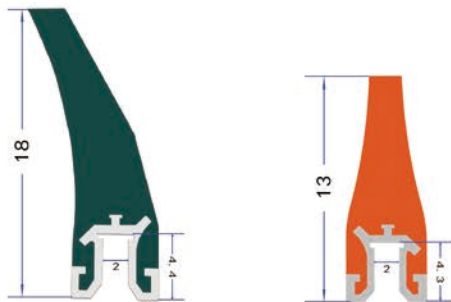
Belt Width (mm)	A (mm)	B (mm)	C (pcs)	Scraper Weight (kg)	Total Weight (kg)
800	800	1650	2	5	24.4
1000	1000	1850	2	6.3	27.1
1200	1200	2050	2	7.6	30.4
1400	1400	2250	2	8.9	33.7
1600	1600	2450	2	10.2	37
1800	1800	2650	2	11.5	40.3
2000	2000	2850	2	12.8	43.6

## Specification: Blue Type

Belt Width (mm)	A (mm)	B (mm)	C (pcs)	Scraper Weight (kg)	Total Weight (kg)
800	800	1650	2	7.3	31.3
1000	1000	1850	2	8.6	34
1200	1200	2050	2	10.3	37
1400	1400	2250	2	12	40
1600	1600	2450	2	13.8	43
1800	1800	2650	2	15.5	46.2
2000	2000	2850	2	17.2	49.5

## Blade Part:

This part touch conveyor belt bottom surface to clean the material on it.



- Wear abrasive Polyurethanes material.
- Color can be customized.
- Temperature from -20℃ to 120℃ available.
- Blade is detachable.
- Used in power plant, mining, port, cement plant...

## Tensioner Part:

Different tensioner types to meet various of conveyor belt type and cleaning requirements.

The first tensioner is 10(L) x 23(W) x 25(H) cm which is small and portable to stall in many narrow and short distance between belt and conveyor frame. 2 bolts to install it on conveyor and 3 bolts fix it on cleaner tube. Easy operation 4kg for each.



The second tensioner is 18(L) x 7(W) x 45(H) cm which is taller to matched the higher distance between conveyor frame and bottom belt. Larger adjustable range is convenient to operate. 2 bolts to install it on conveyor and 3 bolts fix it on cleaner tube.





# CERAMIC BELT CLEANER

The main material of the new ceramic cleaner is alumina, which has good mechanical strength, abrasion resistance and high temperature resistance.

It changes the working mode of the existing scraper cleaner in China and improves the cleaning accuracy. As an indispensable supporting facility for belt conveyors, ceramic belt cleaners have the following advantages:

- Very Strong can withstand various difficult and hard working environment.
- Easily to customize any size for you.
- Wire cleaner can freely install any conveyor as long as drum has bearing.
- Packing well to prevent any broken of the ceramic block.



Belt Width (mm)	Weight	Ceramic Blocks (pcs)	Steel Length (M)
800	9.5	25	3
1000	10	30	3.2
1200	10.5	36	3.4
1400	11	41	3.6
1600	11.5	46	3.8
1800	12	50	4
2000	12.5	55	4.2
2200	13	61	4.4

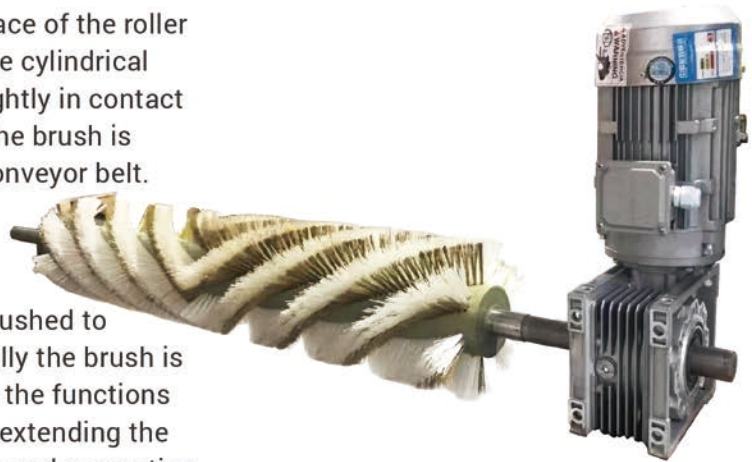
## Data And Details:

Specification	Data
Al <sub>2</sub> O <sub>3</sub> (%)	≥92%
Hardness (Mohs)	9
Water Absorption (%)	≤0.02
Fracture Toughness (MPa) :	3.65
Bending Strength (MPa) :	255
Density (g/cm <sup>3</sup> )	≥3.6
Compressive Strength (MPa)	≥850
Thermal Conductivity (W/m.K)	16.8

# BRUSH BELT CLEANER

Brush belt cleaner can effectively clean the surface of the roller and the bottom surface of the conveyor belt. The cylindrical brush is driven by the motor. The brush tip is slightly in contact with the belt surface. The rotation direction of the brush is opposite to the running direction of the return conveyor belt.

The particulate material on the belt surface is brushed to achieve the purpose of thorough cleaning. Usually the brush is in contact with the belt about 3mm-5mm. It has the functions of preventing the deviation of the conveyor belt, extending the service life of the conveyor belt and accessories, and preventing accidents. It is a necessary accessory for belt conveyor.



## Motor And Reducer Parameters :

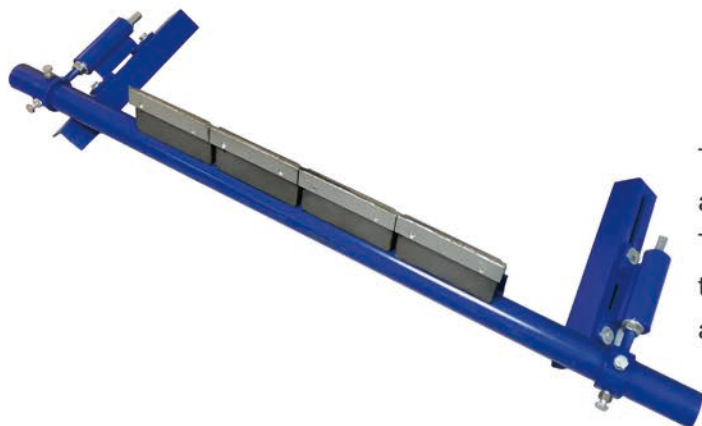
Operating Voltage	380V/660V AC $\pm 10\%$	Non-standard voltage needs to be customized
Power	1.1KW/1.5KW/2.2KW/3KW	Customize
Output speed	132r/min	Customize
Transmission ratio	10.78i	Customize
Output torque	128Nm	Customize
lubricating oil	L-CKD Heavy duty industrial gear oil	Customize
Ambient temperature	-20℃ - 60℃	Customize

## Specification:

Belt Width (mm)	Cleaner Length (mm)	Brush Roller Length (mm)
650	1300	650
800	1450	800
1000	1650	1000
1200	1850	1200
1400	2050	1400
1600	2250	1600
1800	2450	1800
2000	2650	2000

# ALLOY BELT CLEANER

This is **Alloy Primary belt cleaner**. Blade is hard alloy with tidy cutting. Supporting H part is steel material. There is a rubber buffer base on the junction part of the basic tube and H support. Tensioner is spring which better to touch the belt surfaces.



This is Alloy **Secondary belt cleaner**. Blade is hard alloy with tidy cutting. Supporting part is steel plate. There is a rubber buffer base on the junction part of the basic tube and support plate. It is small blades and tensioner so that easily to install.

- Application: cement, mining, metal, power plant.
- Specifics: For high temperature conveyor.
- Blade is replaceable.
- OEM and Customize is available.

# PU V PLOUGH BELT CLEANER

V Plough belt cleaner is located in non-working face of the conveyor belt to clean the residue materials. There will be many residue materials rolled in space between drum and belt without it, which cause the conveyor running difficultly. Support part is steel and blade is PU material, soft and close touch the belt.





# PU I SHAPE BELT CLEANER

I Shape belt cleaner is located in non-working face of the tail pulley position to clean the little residue materials. Used to cleaning the last residue materials before them rolled in space between drum and belt. Support part is steel and blade is PU material, compare to V plough it is easier and freely to install anywhere and any direction on belt.



## FAQ when you send inquiry:

- Where do you want to install.
- How about width of your conveyor belt.
- What materials does the conveyor transport?
- Do you need only blade or whole set? If only blade, which brand do you use before?
- What's the problem of your before belt cleaner?
- Do you have any custom requirements?

Please provide the above information, so that we can give you the most suitable solution to achieve a good cleaning effect of your conveyor machine.





**Room E903, Jianye Five Building, Shangdu Road,  
New Eastern District, Zhengzhou, China. 450008**

TEL: +86-371-66346399

Fax: +86-371-66346399

Website: [www.ssdzj.com](http://www.ssdzj.com)